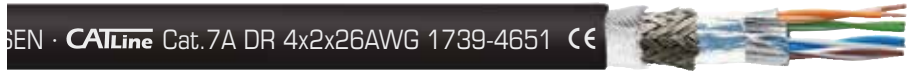


# Industrial Ethernet cables

**CATLine CAT 5e DR** reeling CAT 5e Gigabit Ethernet cable  
**CATLine CAT 6A DR** reeling CAT 6A Gigabit Ethernet cable  
**CATLine CAT 7A DR** reeling CAT 7A Gigabit Ethernet cable



marking example:

SAB BRÜCKSKES · D-VIERSEN · CATLine Cat. 7A DR 4x2x26AWG 1739-4651 CE

Construction:	CATLine CAT 5e DR reeling Ethernet cable	CATLine CAT 6A DR reeling Ethernet cable	CATLine CAT 7A DR reeling Ethernet cable
Dimension:	4 x 2 x 26 AWG		
Conductor:	bare copper strands, fine wires		
Insulation:	special polymer		
Colour code:	white-blue/blue, white-orange/orange, white-green/green, white-brown/brown		
Stranding:	cores twisted to pairs, pairs together		cores twisted to pairs, pairs screened with foil, pairs together
Wrapping:	non-woven tape		—
Screen:	alu foil and tinned copper braiding		aluminized non-woven tape and tinned copper braiding
Wrapping:	non-woven tape		
Sheath material:	PUR / supporting braid / PUR		
Sheath colour:	black (RAL 9005)		

Technical data:	CATLine CAT 5e DR reeling Ethernet cable	CATLine CAT 6A DR reeling Ethernet cable	CATLine CAT 7A DR reeling Ethernet cable
Item number:	1539-4651	1639-4651	1739-4651
Peak operating voltage:	max. 90 V		
Testing voltage	750 V		
core/core:	750 V		
core/screen:	750 V		
Min. bending radius:	for laying and installation (fixed laying):		5 x d
	for repeated winding action (flexible application):		10 x d
	guided on pulleys (flexible application):		12 x d
Temperature range	-50/+90 °C		
fixed laying:	-40/+90 °C		
flexible application:	acc. to IEC 60754-1 + VDE 0482-754-1		
Halogen-free:	acc. to IEC 60754-1 + VDE 0482-754-1		
Oil resistance:	TMPU acc. to EN 50363-10-2 + VDE 0207-363-10-2		
Characteristic impedance:	100Ω ± 10Ω, fulfils the electrical and transmission requirements with high frequency with reference to EN 50288-2-2 / CAT 5	100Ω ± 10Ω, fulfils the electrical and transmission requirements with high frequency with reference to EN 50288-10-2 / CAT 6A	100Ω ± 10Ω, fulfils the electrical and transmission requirements with high frequency with reference to EN 50288-9-2 / CAT 7A
Weather resistance:	very good		
Application:	suitable for EtherCAT and EtherNET/IP applications		
Absence of harmful substances:	acc. to RoHS directive of the European Union, see chapter N „Technical data“		

item no.	type	dimension	max. core-ø mm	outer-ø ± 10% mm	copper figure kg/km	cable weight ≈ kg/km	tensile strength max. N
15394651	CATLine CAT 5e DR	4 x 2 x 26 AWG	1,05	8,5	32,0	79	200
16394651	CATLine CAT 6A DR	4 x 2 x 26 AWG	1,05	8,5	32,0	81	200
17394651	CATLine CAT 7A DR	4 x 2 x 26 AWG	1,05	10,5	38,5	117	200

Other dimensions and colours are possible on request.



Customized  
 plug-and-play solutions  
 from cable manufacturing  
 to customized cable assembly  
 from a single source